

An aerial view of a city skyline, likely New York City, with several prominent skyscrapers. Overlaid on the image are glowing blue and white lines that crisscross the scene, suggesting a network or data flow. There are also several glowing yellow location pins scattered across the image, indicating specific points of interest or data locations. The overall color palette is dominated by blue and orange tones.

APROL R 4.2 – Industrial Control System

Roadmap und Neuerungen des Build 06



APROL R4.2 – Industrial Control System Roadmap



Innovation with Continuity

Life cycle phase

Active

- Product marketed
- Available for sale for new installations
- Supported

Classic

- Functional replacement available
- Available for sale for expansions
- Supported

Limited

- New product no longer manufactured
- Supported - with best practical effort

Obsolete

- No longer available for sale or delivery
- Support not available

Customer commitment

B&R's life cycle management policy states that *no product will be removed from active sale until a compatible, equivalent or superior product is available.*

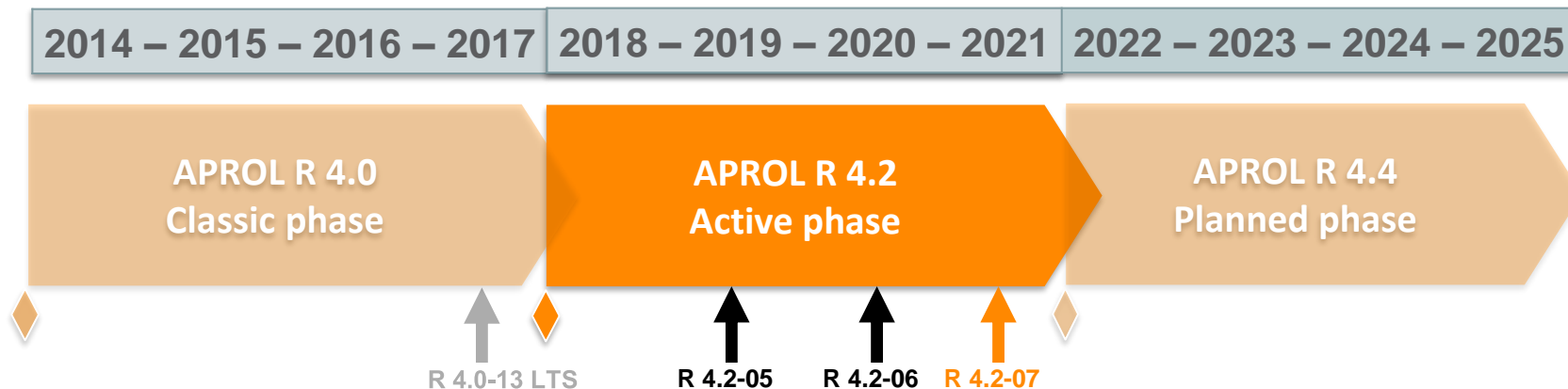
The strategy of functional upward compatibility assures the control application can be carried forward to a new hardware platform.

APROL is designed to facilitate the adoption of new technology with continuity of the underlying customer applications

- Always a path forward
- Protection of intellectual assets
- Underlying products are sustained by defined and documented lifecycle phases
- Active until functional equivalent available



Releases and builds



Build 06

Focus on System hardening & security improvements Phase 1

1600+ Improvements & closed tickets

800+ System extensions

Build 07

Focus on asset management & security improvements Phase 2



APROL R4.2 – Industrial Control System

Build 06 Major Features



Build 06 – Security Improvements

Usage of CA-signed Certificates

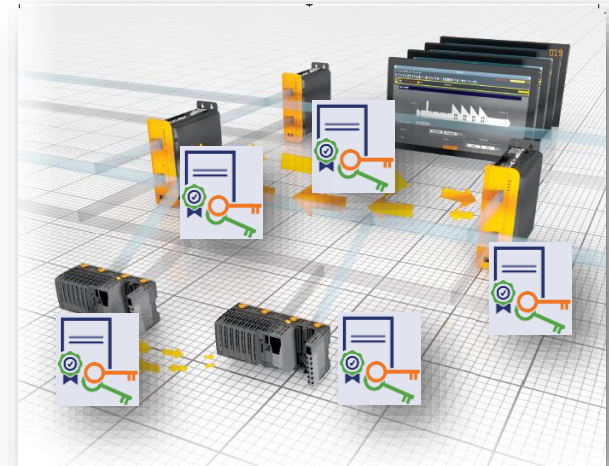
Instead of using a self-signed Certificate, the usage of CA-signed certificates on any secure communication is now possible

Certificate based Encryption

System communication can be fully encrypted (e.g. PLC, Webserver, Remote access)

Best in class PKI Configuration Wizard for any secure communication

Enables engineers to configure a secure communication and helps to identify upcoming certificate issues





Build 06 – Security Improvements

Firewall and white list handling for Controller communication

The firewall is used to restrict network access based on identification of sender or receiver and based on services or port rules. Project rules are applied automatically, additional rules can set on each controller.



Removement of default system user & password

Default username and password can be high security risk. To meet security guidlines, default APROL users and passwords are removed and now part of project configuration



Advanced Intrusion Detection Enviroment

Protect system configuration against unattended changes



APROL R4.2 – Industrial Control System

PERFECTION IN AUTOMATION
A MEMBER OF THE ABB GROUP



Build 06 – New Authentication Server

New authentication server „389 Directory Server“ replaces openLDAP server.

Authentication server

for Operator, mappView, OPC-Ua

Decentralized deployment

each MultiRuntimeServer can host an own instance

Creation of users /operators

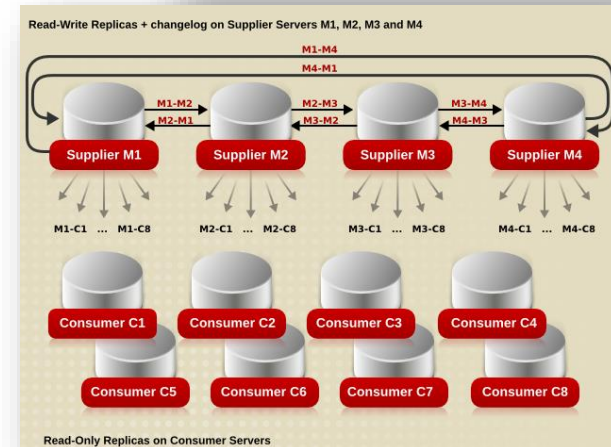
direct in 389 Directory Server.

Definition of Groups

and assignment to users / operators.

Password modification

during runtime by operator





Build 06 – New Engineering Features

PIN type Graphic reference
to access graphic blocks across CFC

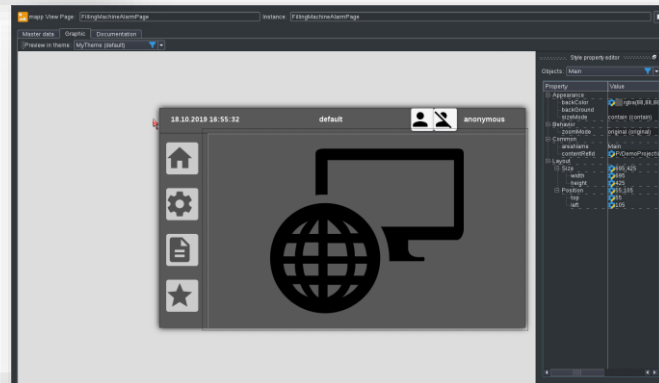


Reduced project export/import
for onsite commissioning



Encrypted export/import
CAE content can be encrypted and validated by fingerprint

mappView Editor
Layout-Editor, Content-Editor, Page-Editor



Support for ARsim

Run multiple ARsim on Notebook, PC or Server



up to 1.3 GHz Atom CPU

1GB RAM, 1GB Flash on Board

Ethernet Interface for TSN



NEW Highend Generation – X20CP3687X

up to 1.6 GHz Atom CPU

2GB RAM, 2GB Flash on Board

Ethernet Interface for TSN



APC based Controller

APROL supports now configuration of APC as controller



Build 06 – New Hardware features

APC relay module enables binary signal output by operator station

- **APC plug-in module 5AC901.ISIO-00** (Ready-Relay) controlled by ApcHwInfo service.
- **Any wiring carried out via automatically provided system variables.**
- **Startup and shutdown behaviour** predefineable
- **Any states** in the automation logic can be output via Automation PC of the operator station without additional wiring effort.





APROL R4.2 – Industrial Control System

Build 07+ Planned Features



Industrial Cyber Security – FIDO2 Authentication

YubiKey replaces weak static username/password credentials with strong hardware-backed public/ private-key credentials.

Password less Authentication (FIDO)

Single factor authentication using a hardware authenticator.

Two factor authentication (2FA)

2FA using a hardware authenticator as an extra layer of protection beyond a password.





Industrial Cyber Security – Trusted Platform Module (TPM 2.0)

TPMs are widely used as a root of trust for platform integrity, remote attestation and cryptographic services.

Target Applications

Desktop, Notebook, Tablet, Server, Networking devices.

Authentication

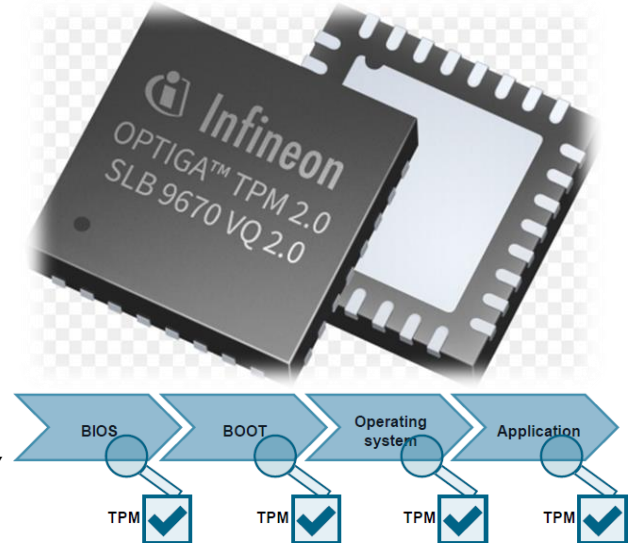
Of people and devices so information is exchanged between authorized individuals and devices only.

Encryption

Protects sensitive information by encrypting it and securely storing the secret keys.

Platform Integrity

Check platform, machine and device integrity to identify manipulation.





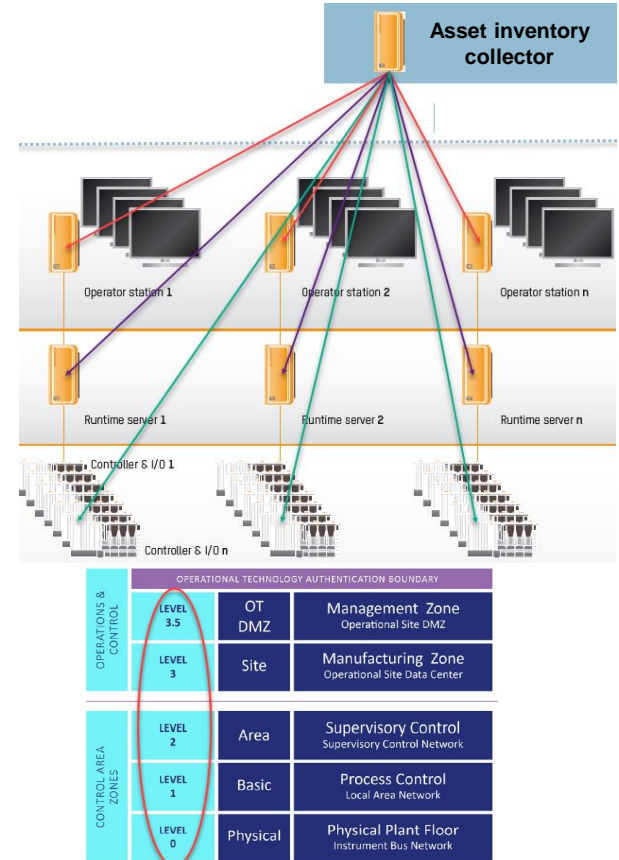
Asset Management – OT asset inventory

OT asset inventory is defined as resources (hardware, software, documents, services, people, facilities, etc.) that are of value to an organization and need to be protected from potential risks.

From our point of view it is comprised of hardware components and software components.

Detailed aspects like asset name (project), vendor (B&R), type (CC, CTRL, BC,...), model (X20CP3586,...), serial no., RTOS/GPOS/firmware, IP/Mac-address, Level 0/1/2/3 (Perdue model) of each asset are included.

System & Self-diagnosis report “**Check installation**” and **Controller System Diagnostics Manager** “Upload hardware tree as file (xml)” provides information for unified lists.





Asset Management – PatchInstaller

New PatchInstaller supports Patch Management of APROL system software and Linux system for all Control Computers.

System software and GPOS

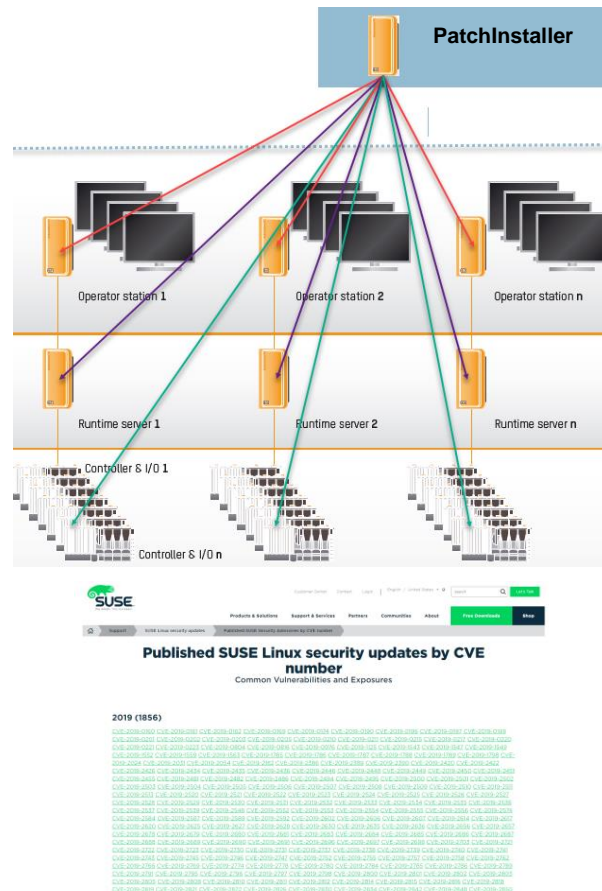
Selective and timed installation of patches and AutoYaST updates.

Sequence defineable

Supports grouping of Control Computers (e.g. primary/secondary, sequence,...).

Update enforcement

Enables confirmed/ unconfirmed update (e.g. unmanned local control centers).





Asset Management – Virus scanner

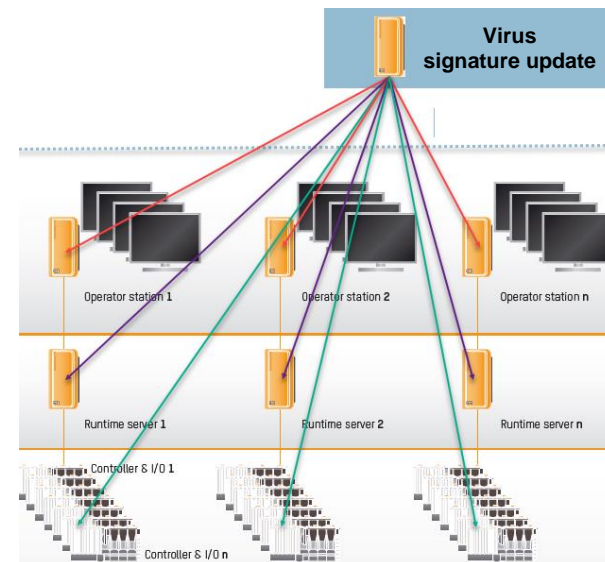
Virus signature update files are updated on a dedicated station

Local virus scanners

Control computer pulls actualization of virus signatures for local scanner.

Update by update files or updated database

Virus signature database update files.



! Attention: Typical statement (EULA) of virus scanner provider

8. CRITICAL APPLICATIONS. The Software is not fault tolerant and use of the Software is prohibited for on-line control equipment in hazardous environments requiring fail-safe performance, such as the operation of aircraft navigation or aircraft communications systems, air traffic control, life-support systems, human implantation, nuclear facilities or systems, weapons systems, or any other application where failure of the Software could lead to death, personal injury, or severe physical or environmental damage.



Asset Management – Certificate Management

Certificate revocation list (CRL)

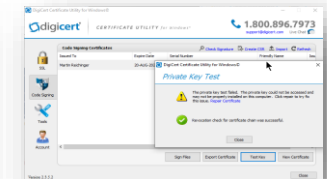
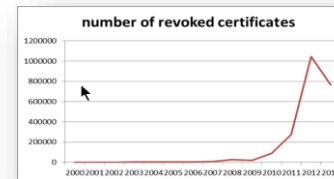
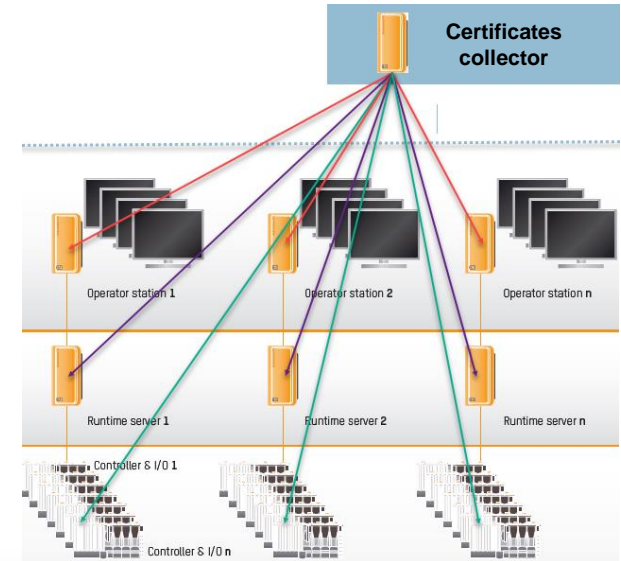
In cryptography, a certificate revocation list (CRL) is a list of digital certificates, that have been revoked by the issuing certificate authority (CA) **before their scheduled expiration date** and should no longer be trusted.

The number of revoked certificates has increased dramatically in recent years.

The service must collect all certificates whose expiration date has not yet expired.

The URL of the CRL is encoded (crl) in end-entity certificates. The serial number of certificate must be evaluated against revocation list.

Action: Generate info “n of m revoked certificates”





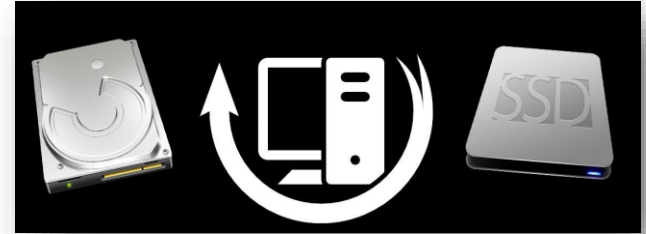
APROL R4.2 – Industrial Control System Tools



Tools – HD Clone

Full Backup & Disaster Recovery Tool

Create Full Backups or fast software recovery after hardware disaster



Delta Backup

Create periodically backups and store only changes

Clone Installation

Fast cloning of drives including changes to disk size or partitioning



Full Validation and Reporting

Each Backup or Restore is validated and finally reports are stored as PDF



Live Präsentation

PERFECTION IN AUTOMATION
A MEMBER OF THE ABB GROUP



PERFECTION IN AUTOMATION

